

Network Installation Instructions

Wavefunction Software

(Spartan, Spartan Parallel Suite, Spartan Student,
Odyssey Student, Odyssey Instructor)

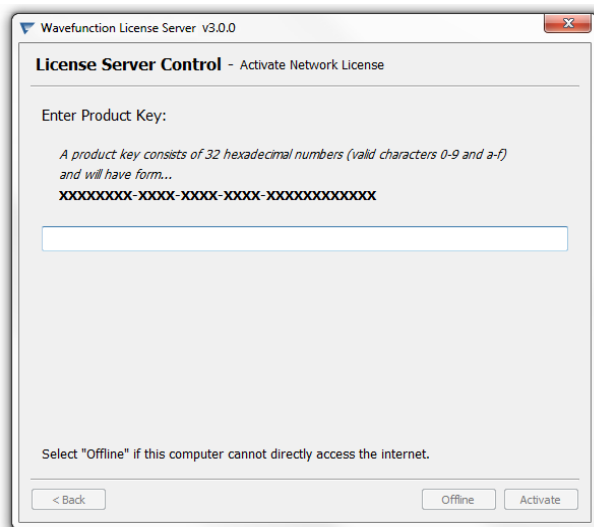
Installing License Server Control The license server machine can be a Windows (7 or higher, 64-bit only) or Macintosh (Mavericks or higher) physical machine (not a VM). **If use of a virtual machine is necessary, Wavefunction ONLY supports VM's as license managers for network licenses or client machines under current maintenance, or for annual site licenses. Contact sales@wavefun.com if you plan to use virtual machines with our software.**

1) Download, install, and run the Wavefunction License Server Program:

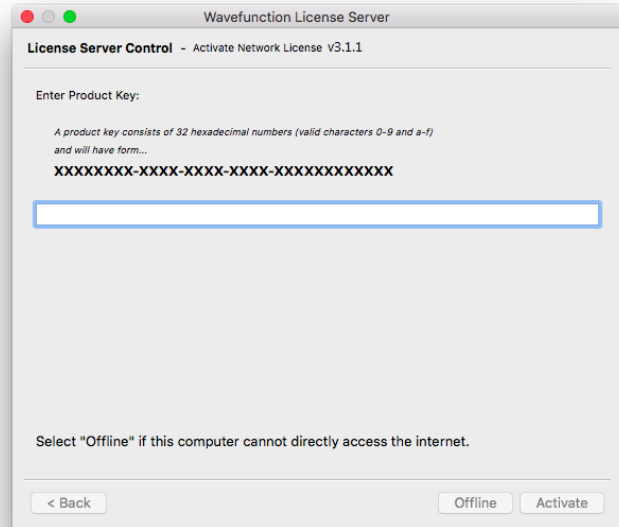
[Windows License Server](#)
[Macintosh License Server](#)

Installation will also install the current Sentinel Run-time Environment. If an older version is found you may be prompted to remove this and install the latest version.

2) Enter your Network License Product Key, and click Activate:

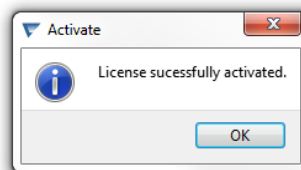


Windows version



Macintosh version

3) Successful activation will be confirmed with the message:



4) If you have existing Wavefunction licensing, click the Update button. You will be prompted to choose an Update method (either a Product Key or a Key Update File). Select the option you were provided with and click Next. You will either be prompted to provide your Product Key and to Activate, or to Browse and Open your Key Update file and Apply the file. Either will result in updating your licensing and the changes will be reflected in the License Server Control Program.

Configuring Client Machines - Spartan Download and install Spartan Student, Spartan'16 and/or Spartan'16 Parallel Suite software on the client machines. Visit the [Wavefunction Downloads Page](#) and download the **MOST RECENT** versions of Spartan and Odyssey to utilize with your new licensing. For Spartan'16 Parallel Suite customers, access [SSPD & SMD data collection downloads HERE](#).

When prompted to choose a license type, select the Network option. In the field provided, enter in the IP address of the machine that will act as the license server (see page 1). For silent installation (Windows only), see the end of this document.

Configuring Client Machines – Odyssey Download and install the Odyssey Instructor and/or Odyssey Student software on the client machines. Visit the [Wavefunction Downloads Page](#) to see a list of available downloads.

When prompted to choose a license type, select the Network option. In the field provided, enter in the IP address of the machine that will act as the license server (see page 1). For silent installation (Windows only), see the end of this document.

This completes the network installation process. Open the program to test for license access, and go to Help->About to view license information.

Silent Installation (Windows) – For Macintosh, contact support@wavefun.com Odyssey Instructor, Odyssey Student, Spartan Student, Spartan and Spartan Parallel Suite may be installed silently. To perform silent install:

Download and save the installer for the program you wish to install silently. Open an Admin Level Command Prompt. CD to the directory where the installer is saved.

For Spartan Student, run:

```
SpartanStudentInstaller727.exe /S /Network=X.X.X.X
```

Where X.X.X.X is the IP address of the machine that will act as the license server.

For Spartan'16 or Spartan'16 Parallel Suite, run:

```
Spartan16Installer207.exe /S /Network=X.X.X.X
```

Where X.X.X.X is the IP address of the machine that will act as the license server.

For Odyssey, run:

```
Odyssey-6-Student-Installer.exe /S /Network=X.X.X.X                   —or—  
Odyssey-6-Instructor-Installer.exe /S /Network=X.X.X.X
```

Where X.X.X.X is the IP address of the machine that will act as the license server.

Contact SUPPORT@WAVEFUN.COM with any issues.

Last Updated 4 May 2018 - wso